



## pressure relief valve, direct controlled DN 12

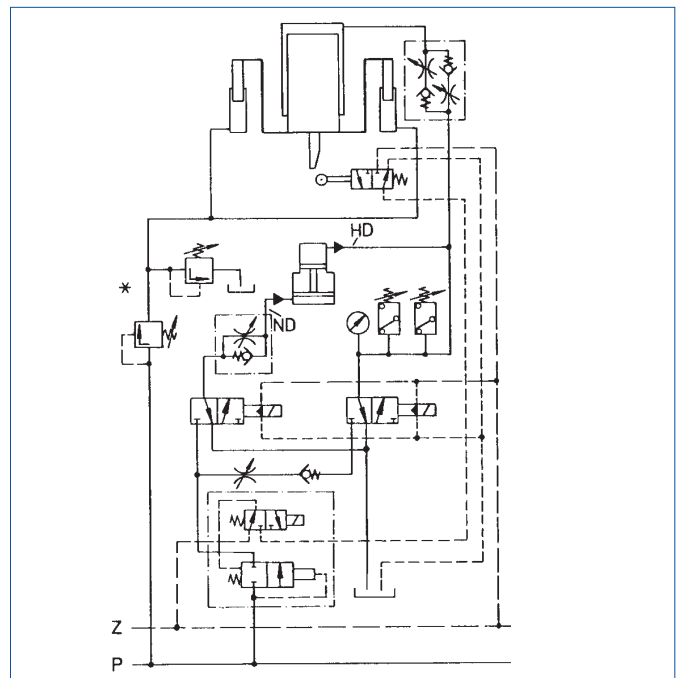
for water and oil  
max. 650 bar

Pressure limiting valves are used to limit a system pressure in the hydraulics. They were specially developed for water hydraulics. Using these pressure limiting valves post-connected valves or cylinders can be supplied with a continuously controllable reduced pressure in accordance with the circuit diagram. Pressure limiting valves are sealed by pressing two metal cones against one another. The max. working pressure should not exceed 650 bar.

### Special features:

The pressure limiting valve responds without delay when the preset system pressure is exceeded. It can be supplied for various different pressure levels. Within each pressure level it can be set continuously and finely on the spring column. A possible lead seal protects against unauthorized adjustment. All wear parts are made of corrosion resistant materials, easy to access and fast to replace. The mounting position can be freely chosen.

Mounting example:

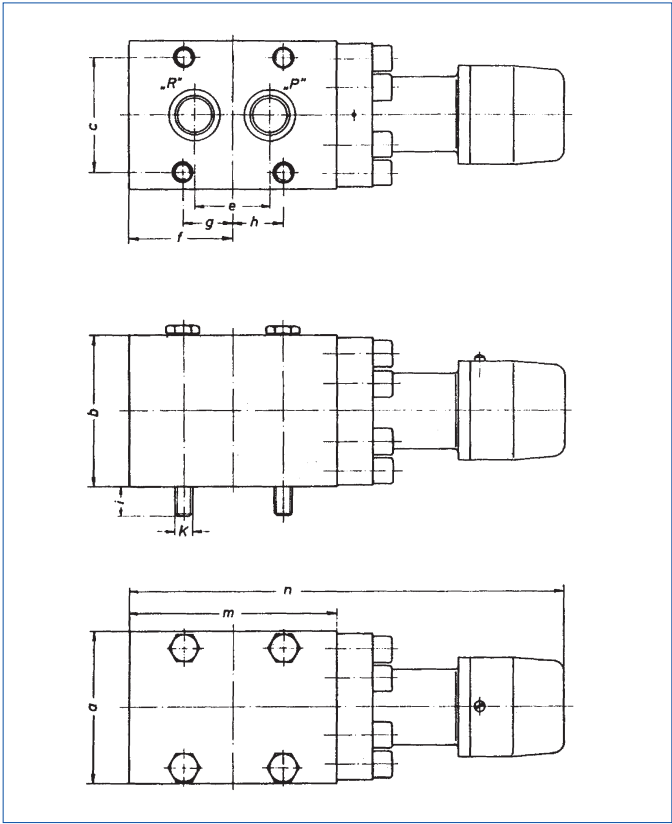


\* pressure limiting valve

Technical data:

Construction type:  
 Cone seat valve  
 Mounting:  
 Plate mounting  
 Line connections:  
 Via mounting plate  
 Mounting position:  
 Any  
 Sealing on the connection surface:  
 O-rings  
 max. operating pressure:  
 650 bar  
 Pressure fluid:  
 HFA or non-lubricated water  
 Seal on the seat:  
 Metal to metal  
 Flow direction:  
 from "P" to "A"  
 Fluid temperature:  
 +5°C to +55°C  
 max. perm. flow rate:  
 160 l/min

Dimensional drawing:



P = infeed  
 R = return

O-ring seal for ports/connections

P = 15x2,5  
 R = 15x2,5

| NW |  | P  | R  | Z | a  | b  | c  | d | e  | f  | g  | h  | i  | k  | l | m   | n   |
|----|--|----|----|---|----|----|----|---|----|----|----|----|----|----|---|-----|-----|
| 12 |  | 12 | 12 |   | 60 | 50 | 46 |   | 50 | 55 | 30 | 30 | 10 | M8 |   | 110 | 207 |